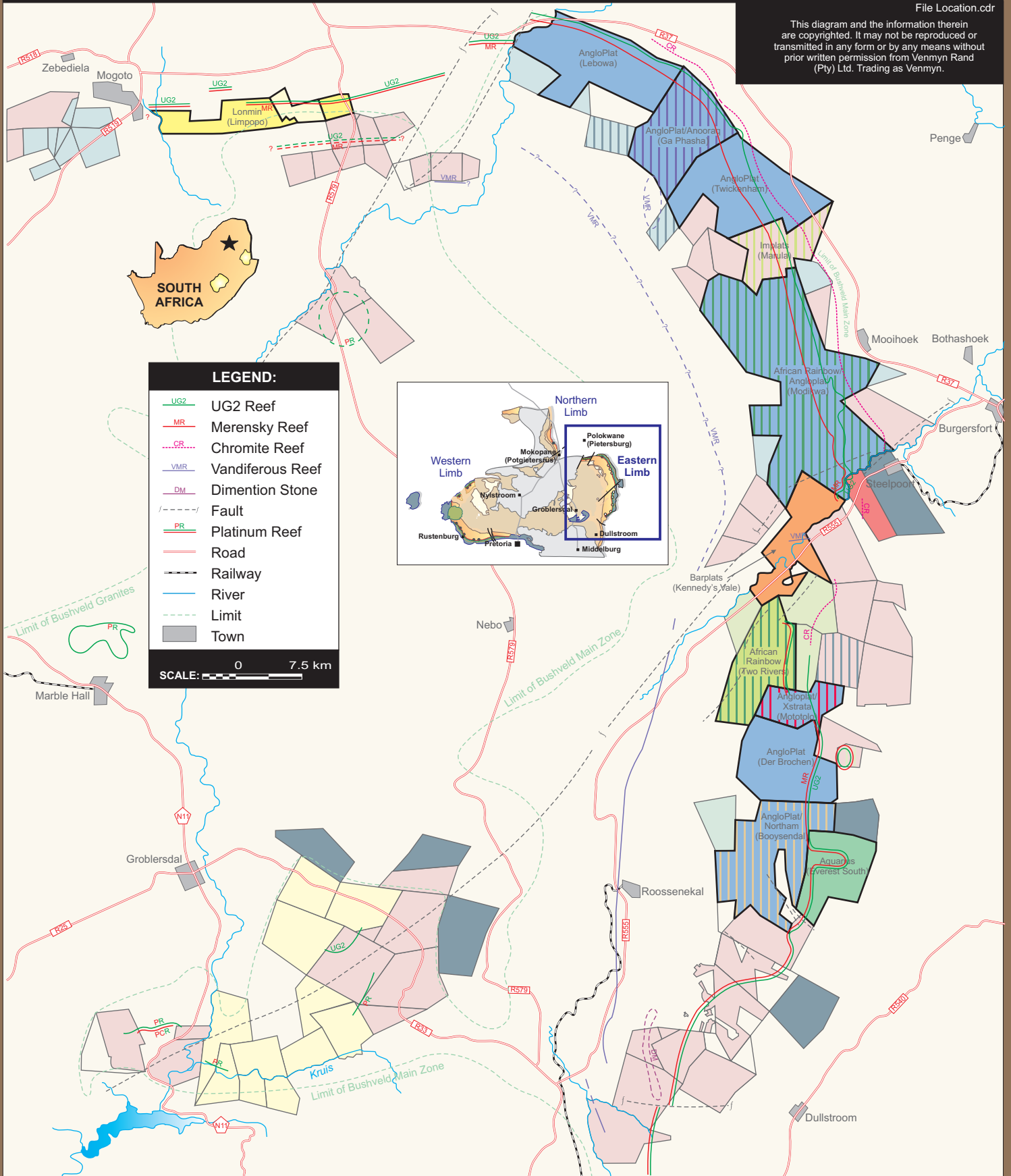


MINERAL RIGHTS ALONG THE EASTERN LIMB OF THE BUSHVELD COMPLEX (2006)

File Location.cdr

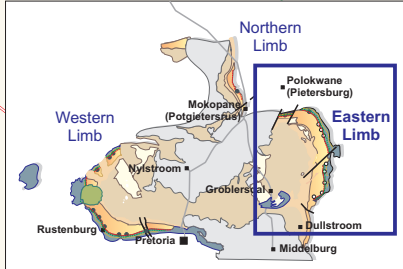
This diagram and the information therein are copyrighted. It may not be reproduced or transmitted in any form or by any means without prior written permission from Venmyn Rand (Pty) Ltd. Trading as Venmyn.



LEGEND:

- UG2 Reef
- Merensky Reef
- - - Chromite Reef
- Vandiferous Reef
- Dimention Stone
- - - Fault
- Platinum Reef
- Road
- Railway
- River
- - - Limit
- Town

SCALE: 0 7.5 km



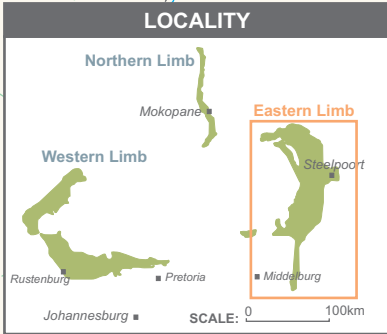
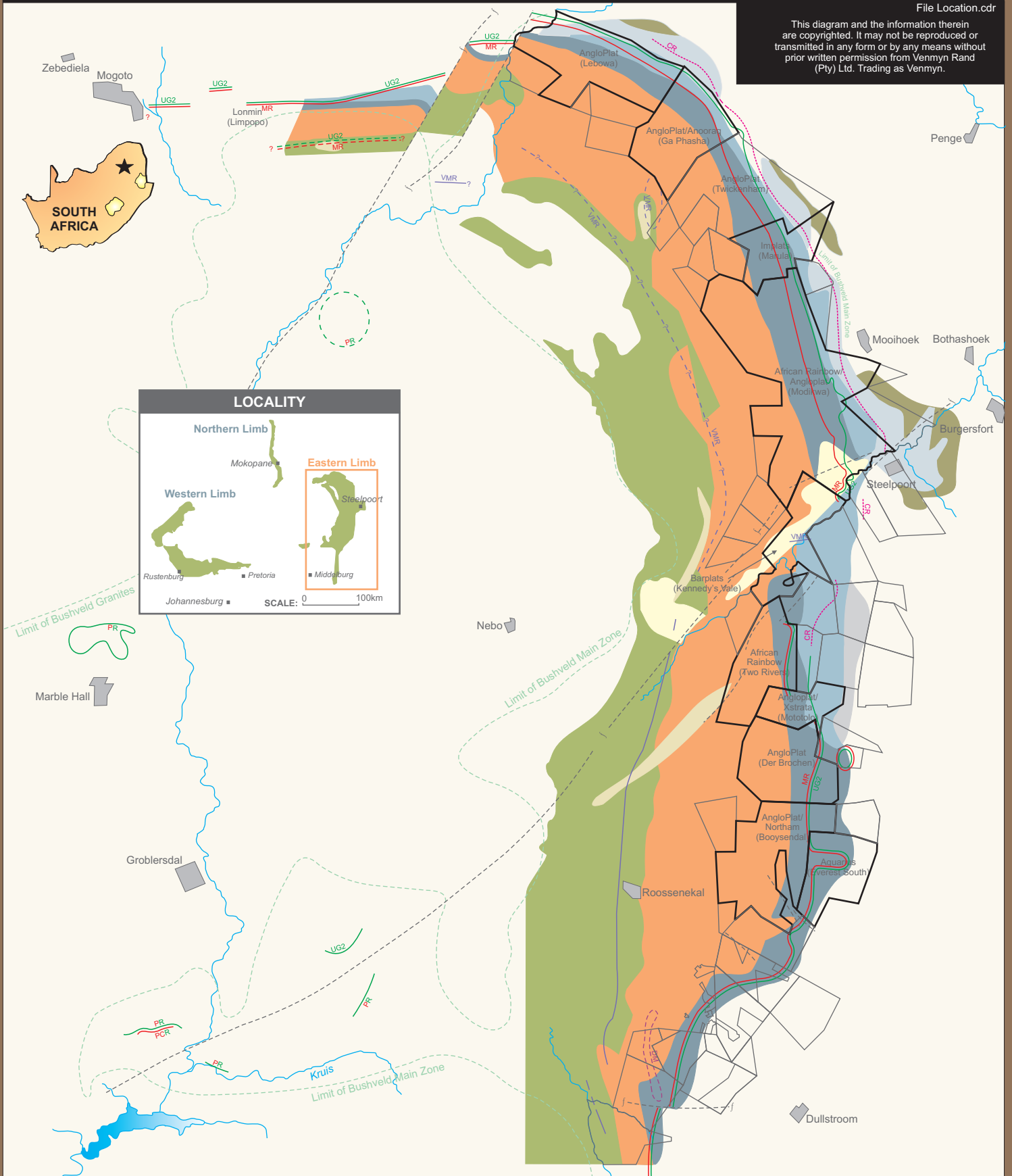
MINES, HOLDINGS AND PROSPECTING RIGHTS:

 Anglo Prospecting Right/Option	 Implats/Misc Operating Mine	 Miscellaneous Prospecting Right/Option
 Anglo/Anglo Platinum Prospecting Right/Option	 Implats Prospecting Right/Option	 Anglo Platinum/Misc Prospecting Right/Option
 Anglo Platinum Operating Mine	 Implats/Misc Prospecting Right/Option	 Northam/Anglo Platinum Operating Mine
 Anglo Platinum Prospecting Right/Option	 Implats/African Rainbow Operating Mine	 Xstrata/Anglo Platinum Operating Mine
 Anooraq/Anglo Platinum Operating Mine	 Lonmin Operating Mine	 Barplats Operating Mine
 Aquarius Operating Mine	 Lonmin Prospecting Right/Option	 Boynton Prospecting Right/Option
 Aquarius Prospecting Right/Option	 African Rainbow Minerals/Anglo Platinum Operating Mine	

GEOLOGY ALONG THE EASTERN LIMB OF THE BUSHVELD COMPLEX

File Location.cdr

This diagram and the information therein are copyrighted. It may not be reproduced or transmitted in any form or by any means without prior written permission from Venmyn Rand (Pty) Ltd. Trading as Venmyn.



LEGEND:

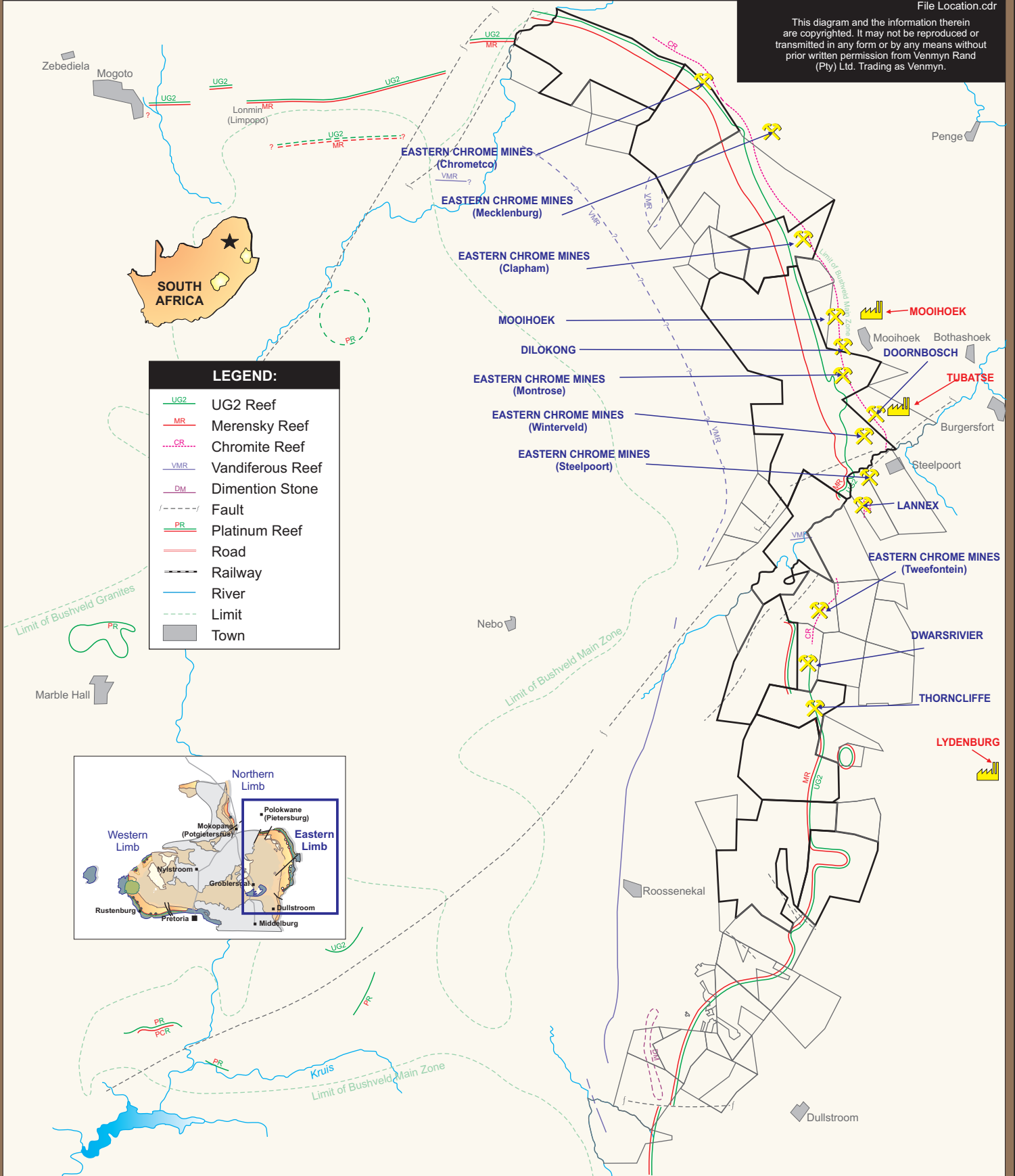
- | | | | | | | | |
|--|----------------------|--|----------------------------|--|------------------|--|-------|
| | Lebowa Granite Suite | | Lower Critical Zone | | Chromite Reef | | River |
| | Alluvium | | Chromite Reef | | Vandiferous Reef | | Limit |
| | Upper Zone | | Lower Zone | | Dimention Stone | | Town |
| | Main Zone | | Southern Facies Lower Zone | | Fault | | |
| | Merensky Reef | | Marginal Zone | | Platinum Reef | | |
| | UG2 Reef | | UG2 Reef | | Road | | |
| | Upper Critical Zone | | Merensky Reef | | Railway | | |

SCALE: 0 7.5 km

CHROME MINES, SMELTERS AND GEOLOGY ALONG THE EASTERN LIMB OF THE BUSHVELD COMPLEX

File Location.cdr

This diagram and the information therein are copyrighted. It may not be reproduced or transmitted in any form or by any means without prior written permission from Venmyn Rand (Pty) Ltd. Trading as Venmyn.



LEGEND:

- UG2 UG2 Reef
- MR Merensky Reef
- CR Chromite Reef
- VMR Vandiferous Reef
- DM Dimention Stone
- Fault
- PR Platinum Reef
- Road
- Railway
- River
- Limit
- Town

LEGEND:

- Lebowa Granite Suite
- Upper Zone
- Main Zone
- Merensky Reef
- UG2 Reef
- Upper Critical Zone
- Lower Critical Zone
- Chromite Reef
- Lower Zone
- Marginal Zone
- Smelters
- Chrome Mines

SCALE: 0 7.5 km