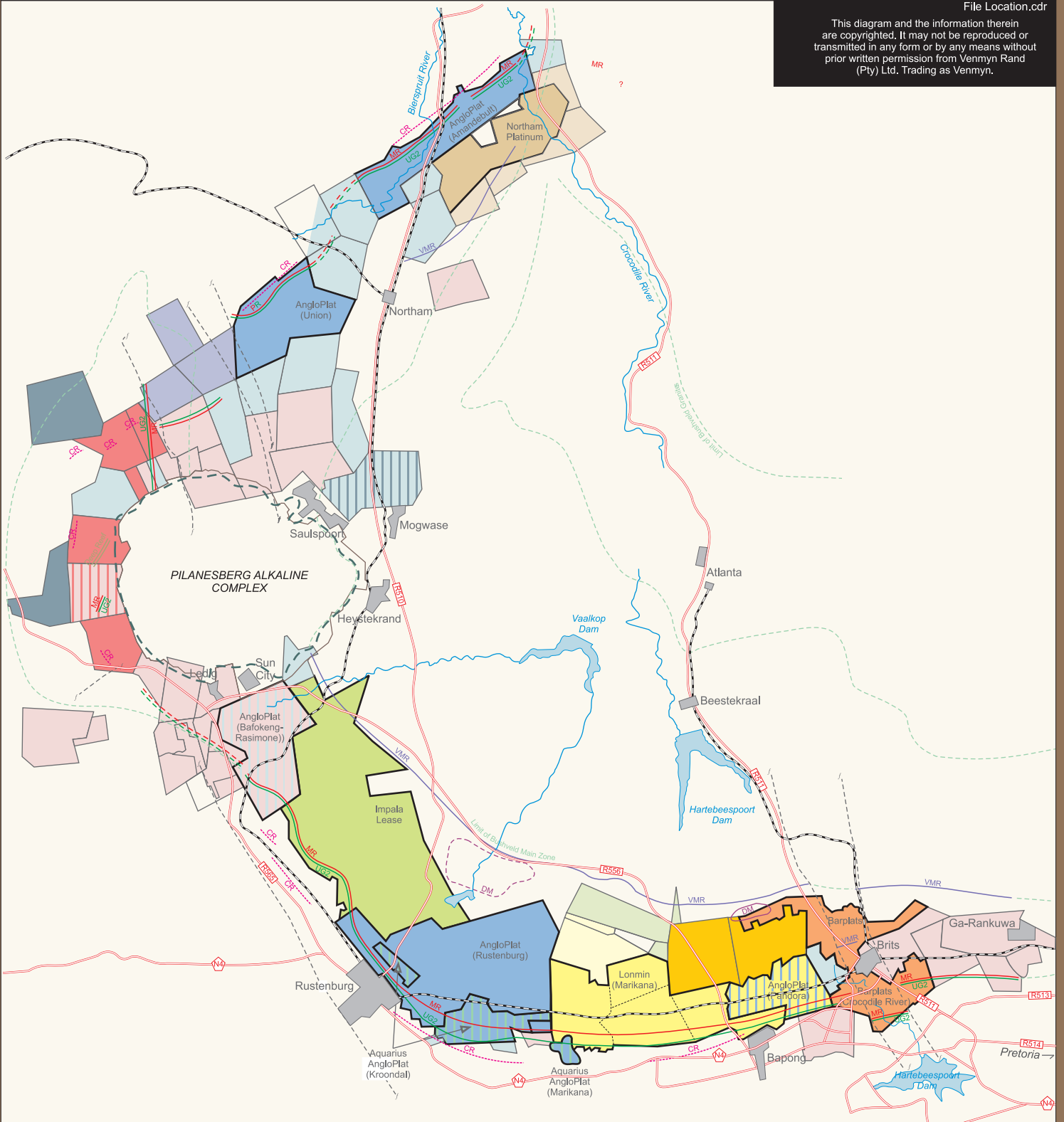


**MINERAL RIGHTS ALONG THE WESTERN LIMB OF THE BUSHVELD COMPLEX (2006)**

File Location.cdr

This diagram and the information therein are copyrighted. It may not be reproduced or transmitted in any form or by any means without prior written permission from Venmyn Rand (Pty) Ltd. Trading as Venmyn.



**LEGEND:**

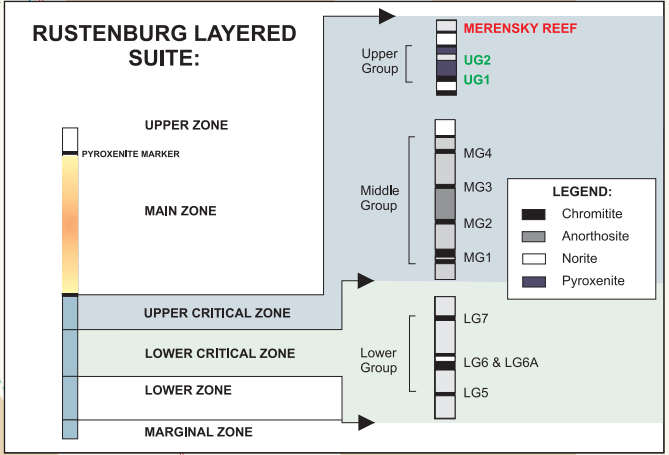
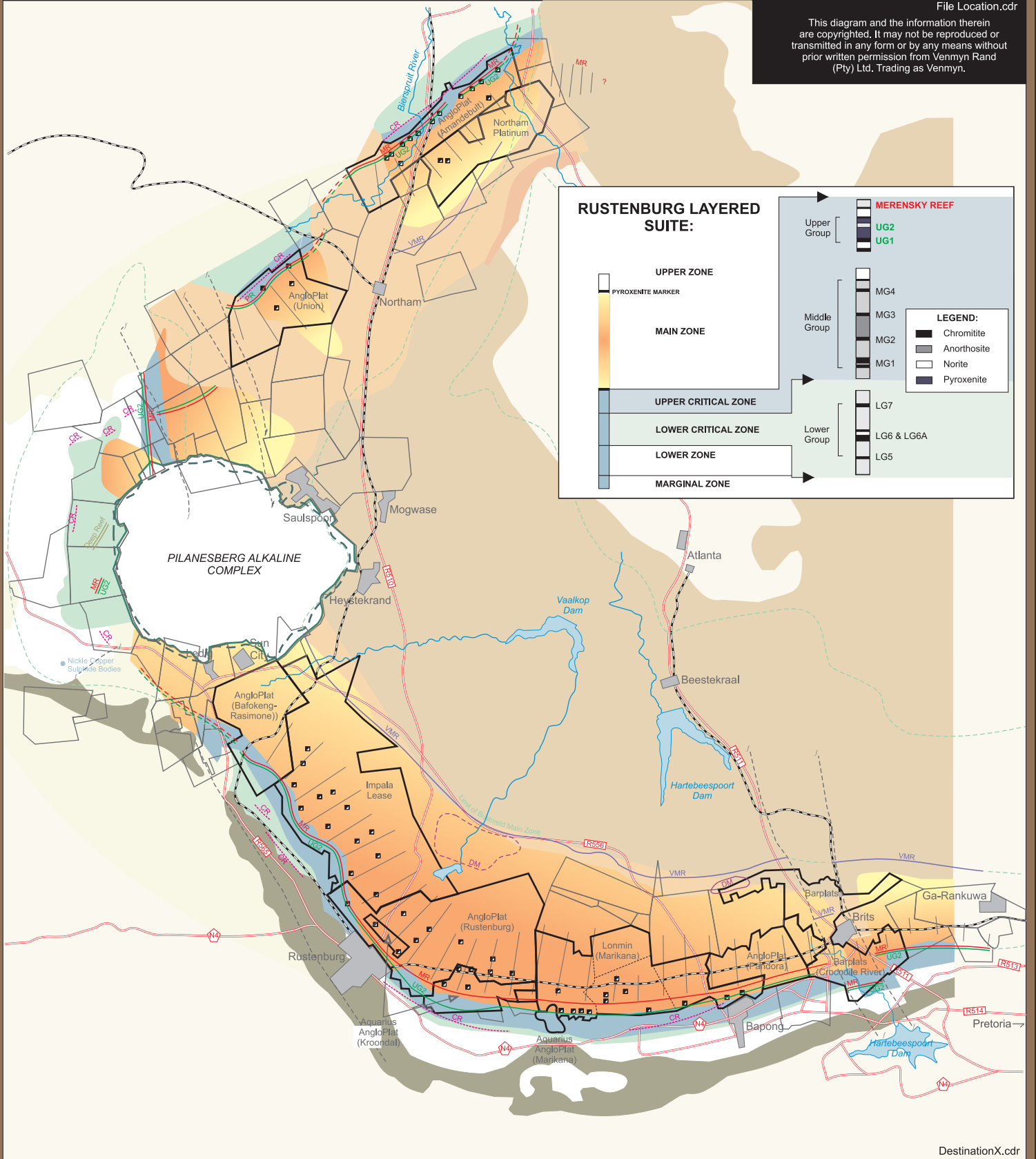
- |                                               |                                                |                 |
|-----------------------------------------------|------------------------------------------------|-----------------|
| Anglo Prospecting Right/Option                | Lonmin Operating Mine                          | Dimention Stone |
| Anglo/Anglo Platinum Prospecting Right/Option | Lonmin Prospecting Right/Option                | Fault           |
| Anglo Platinum Operating Mine                 | Lonmin/Anglo Platinum Prospecting Right/Option | Platinum Reef   |
| Anglo Platinum Prospecting Right/Option       | Northam Platinum Operating Mine                | Road            |
| Anooraq Prospecting Right/Option              | Northam Prospecting Right/Option               | Railway         |
| Aquarius Operating Mine                       | Miscellaneous Prospecting Right/Option         | River           |
| Aquarius/Anglo Platinum Operating Mine        | Afplats Prospecting Right/Option               | Limit           |
| Barplats Operating Mine                       | Anglo Platinum/Misc Prospecting Right/Option   | Town            |
| Boynton Prospecting Right/Option              | UG2 Reef                                       |                 |
| Boynton/Misc (Nkwe)Prospecting Right/Option   | Merensky Reef                                  |                 |
| Implats Operating Mine                        | Chromite Reef                                  |                 |
| Implats Prospecting Right/Option              | Vandiferous Reef                               |                 |

SCALE: 0 7.5 15 km

**GEOLOGY ALONG THE WESTERN LIMB OF THE BUSHVELD COMPLEX (2006)**

File Location.cdr

This diagram and the information therein are copyrighted. It may not be reproduced or transmitted in any form or by any means without prior written permission from Venmyn Rand (Pty) Ltd. Trading as Venmyn.



Source: Venmyn

**LEGEND:**

- Lebowa Granite Suite
- Upper Zone
- Main Zone
- Merensky Reef
- UG2 Reef
- Upper Critical Zone
- Lower Critical Zone
- LG6 Chromitite Layer
- Lower Zone
- Marginal Zone
- Vandiferous Reef
- Transvaal Sequence
- Pilansberg Alkaline Complex and Other
- Basement Granite
- Dimension Stone
- Fault
- Platinum Reef
- Road
- Railway
- River
- Limit
- Town

**SCALE:**



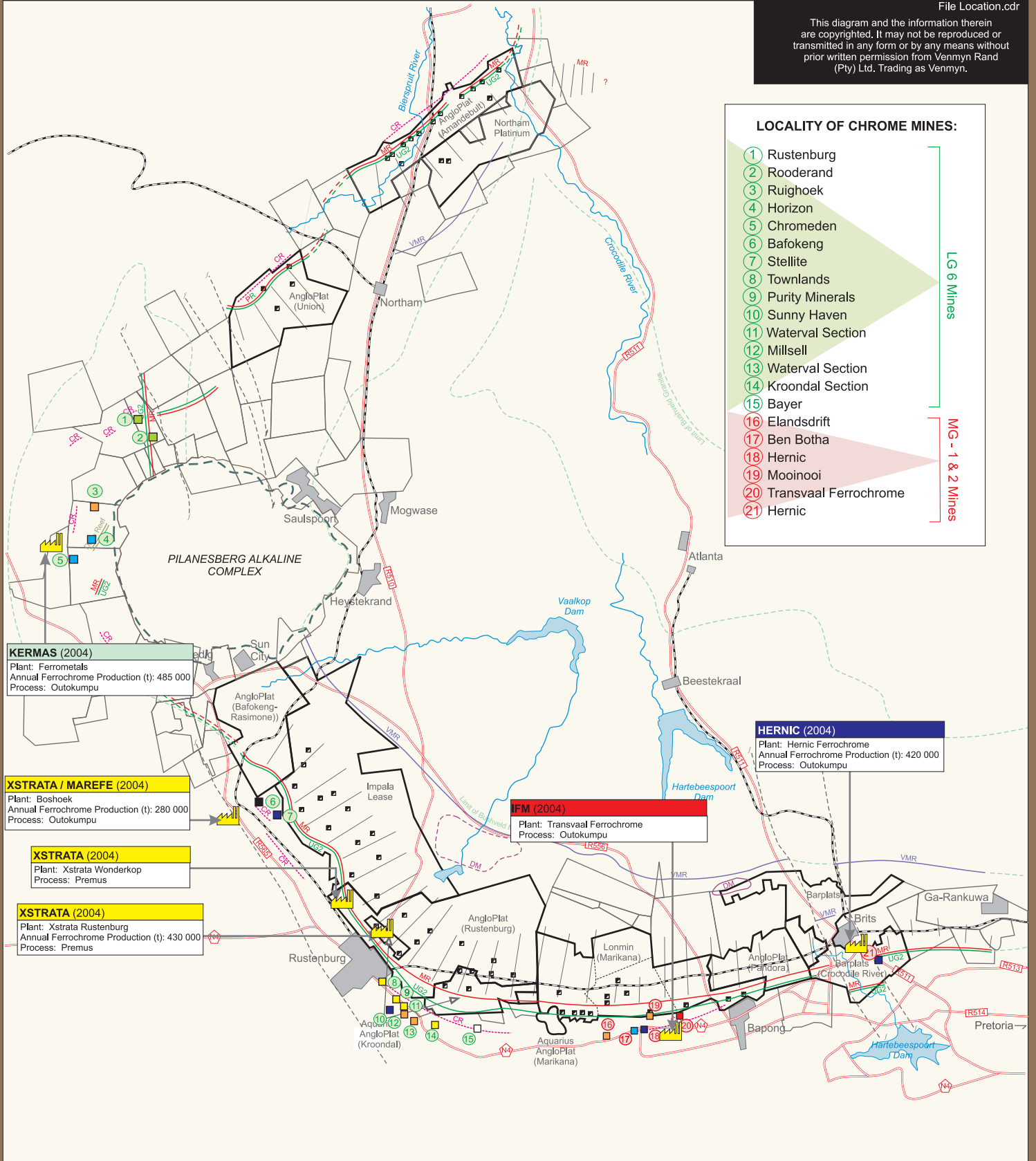
This diagram and the information therein are copyrighted. It may not be reproduced or transmitted in any form or by any means without prior written permission from Venmyn Rand (Pty) Ltd. Trading as Venmyn.

DestinationX.cdr

**CHROME MINES ALONG THE WESTERN LIMB OF THE BUSHVELD COMPLEX (2006)**

File Location.cdr

This diagram and the information therein are copyrighted. It may not be reproduced or transmitted in any form or by any means without prior written permission from Venmyn Rand (Pty) Ltd. Trading as Venmyn.



**LOCALITY OF CHROME MINES:**

- ① Rustenburg
  - ② Rooderand
  - ③ Ruighoek
  - ④ Horizon
  - ⑤ Chromeden
  - ⑥ Bafokeng
  - ⑦ Stellite
  - ⑧ Townlands
  - ⑨ Purity Minerals
  - ⑩ Sunny Haven
  - ⑪ Waterval Section
  - ⑫ Millsell
  - ⑬ Waterval Section
  - ⑭ Kroondal Section
  - ⑮ Bayer
  - ⑯ Elandsdrift
  - ⑰ Ben Botha
  - ⑱ Heric
  - ⑲ Mooinooi
  - ⑳ Transvaal Ferrochrome
  - ㉑ Heric
- LG 6 Mines (①-⑮)  
MG - 1 & 2 Mines (⑯-㉑)

**KERMAS (2004)**  
Plant: Ferrometals  
Annual Ferrochrome Production (t): 485 000  
Process: Outokumpu

**XSTRATA / MAREFE (2004)**  
Plant: Boshok  
Annual Ferrochrome Production (t): 280 000  
Process: Outokumpu

**XSTRATA (2004)**  
Plant: Xstrata Wonderkop  
Process: Premus

**XSTRATA (2004)**  
Plant: Xstrata Rustenburg  
Annual Ferrochrome Production (t): 430 000  
Process: Premus

**IFM (2004)**  
Plant: Transvaal Ferrochrome  
Process: Outokumpu

**HERIC (2004)**  
Plant: Heric Ferrochrome  
Annual Ferrochrome Production (t): 420 000  
Process: Outokumpu

Source: Venmyn

**LEGEND:**

- Samancor
- SA Chrome
- Xstrata
- Bakokeng
- Bayer
- Rustenburg Minerals
- Heric
- International Ferro Metals
- Kermas

- Smelter
- Town
- River
- UG2 Reef
- Merensky Reef
- LG6 Chromitite Layer
- MG1 Chromitite Layer
- Fault
- Railway
- Tarred Road

DestinationX.cdr

**SCALE:**



This diagram and the information therein are copyrighted. It may not be reproduced or transmitted in any form or by any means without prior written permission from Venmyn Rand (Pty) Ltd. Trading as Venmyn.