



Sabi Gold Ltd

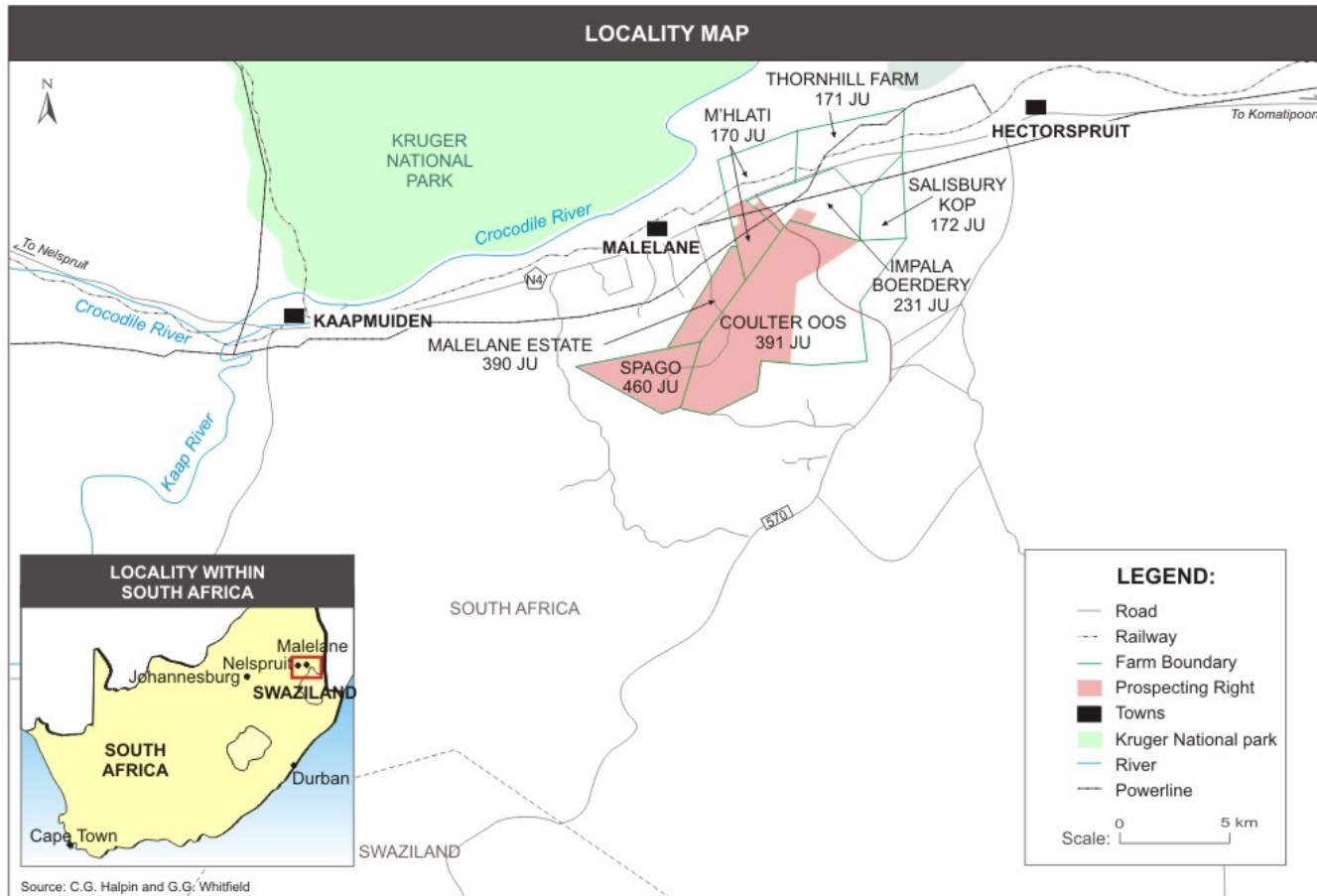
# Corporate Presentation

*Sabi Gold Ltd*

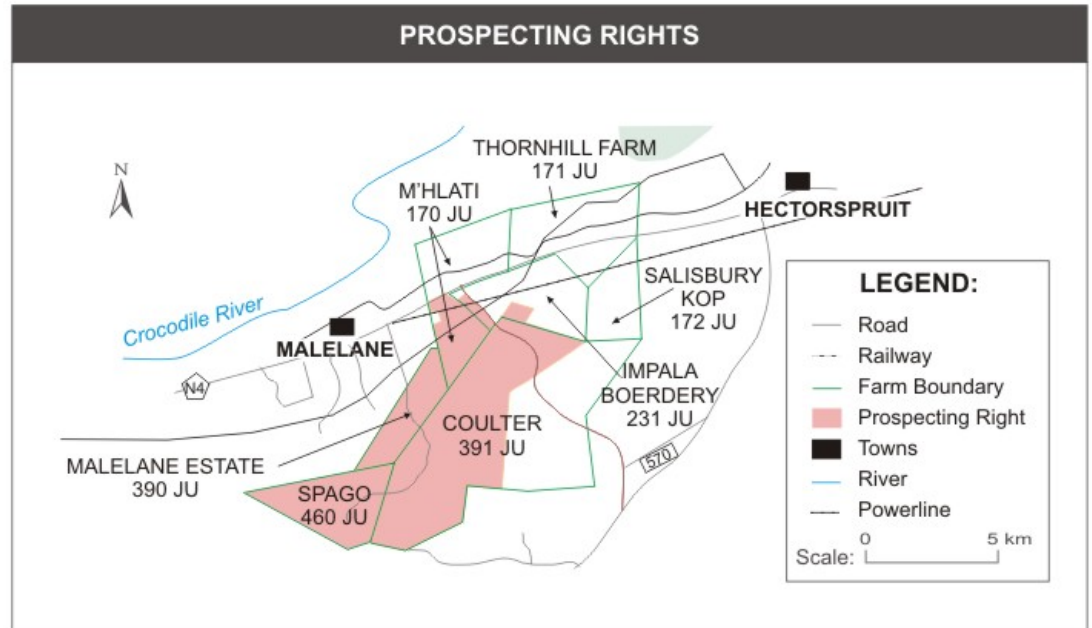
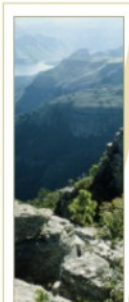
*Presented by Russell Lamming*

*Commercial Director*

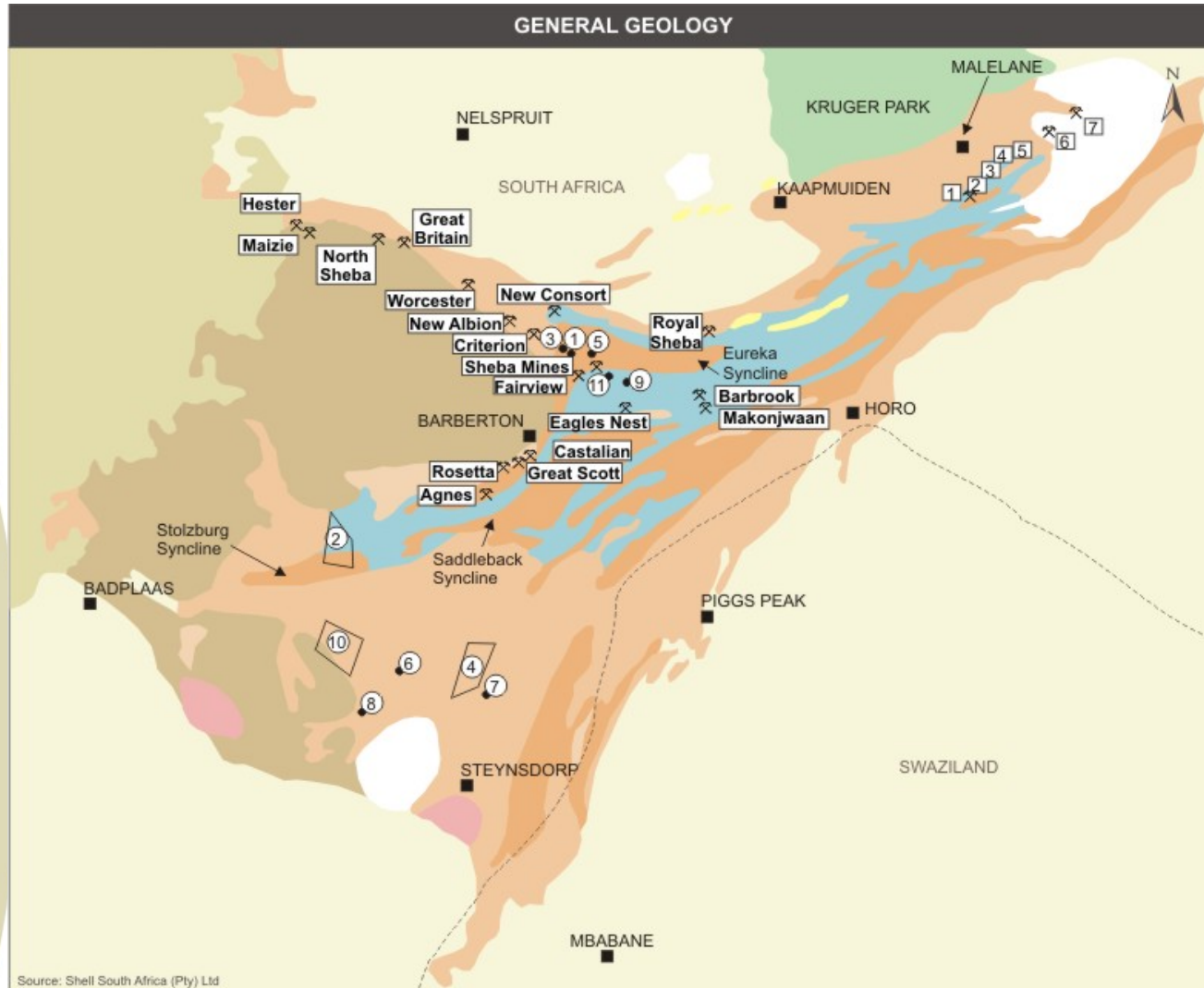
# General Locality



# Prospecting Rights



# General Geology



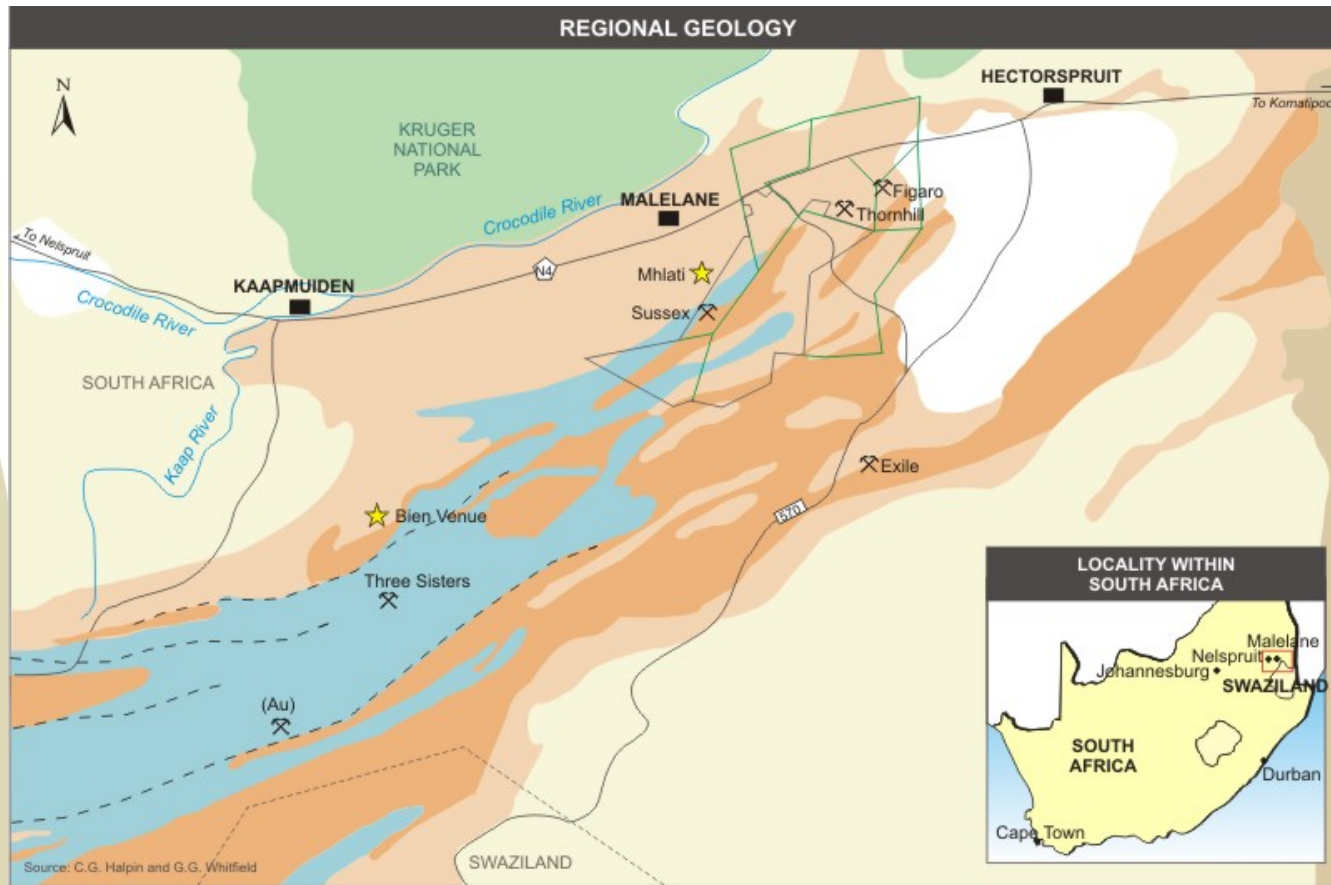
**LEGEND:**

- Transvaal Sequence
- Moodies Group
- Fig Tree Group
- Onverwacht Group
- Younger plutons
- Syenites
- Tonalitic granites
- Migmatites and homogeneous granites
- Country Border
- ① Baviaanskop Formation
- ② Belvue Road Formation
- ③ Clutha Formation
- ④ Hooggenoeg Formation
- ⑤ Joe's Luck Formation
- ⑥ Komati Formation
- ⑦ Kromberg Formation
- ⑧ Sandspruit Formation
- ⑨ Sheba Formation
- ⑩ Theespruit Formation
- ⑪ Swartkoppie Formation
- ⌘ Gold Mines
- ① Sussex Gold Mine
- ② Rogoffs Gold Prospect
- ③ Beacon Gold Prospect
- ④ Coulter Gold Prospect
- ⑤ Horseshoe Gold Prospect
- ⑥ Thornhill Gold Mine
- ⑦ Figaro Gold Mine

Scale: 0 10 km

Source: Shell South Africa (Pty) Ltd

# Regional Geology



**LEGEND:**

- Road
- Kruger National park
- River
- Town
- Prospecting Permit
- Farm Boundary
- Country Border
- Sandstone Shale, Quartzite
- Conglomerate - Undifferentiated Moodies Group
- Shale Greywacke, Chert, Iron Formation - Undifferentiated Fig Tree Group
- Mafic & Ultramafic
- Metavolcanics, Chemical Sediments Felsic Schists - Undifferentiated Onverwacht Group
- Basement Granite, Gneiss & Migmatite
- Later Granite
- Karoo Sediments
- ⌘ Gold Mine (Abandoned)
- Faults
- Borehole

Scale: 0 5 km

Source: C.G. Halpin and G.G. Whitfield